

MONTHLY MEMBERSHIP PROGRESS REPORT

LOCATION NEW JERSEY

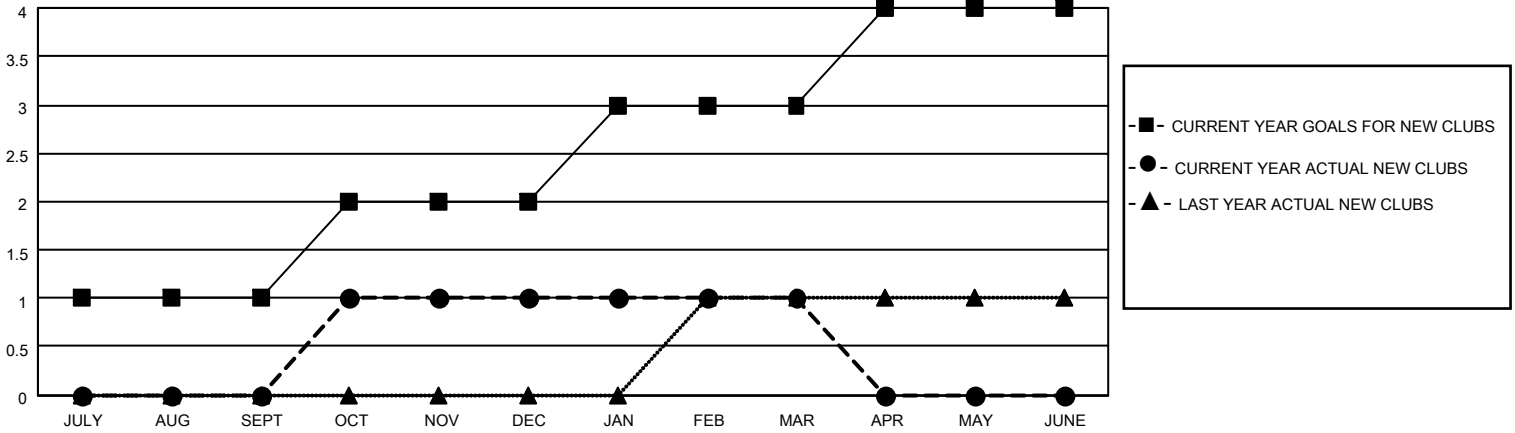
District 16 J

Results as of: 3/31/2022

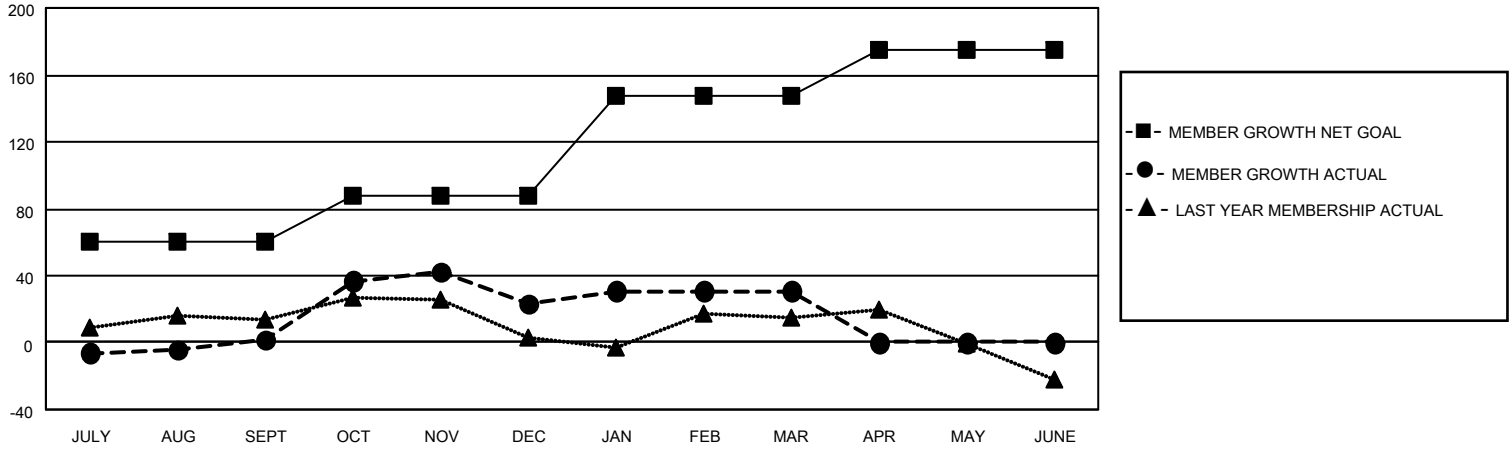
Clubs			
RESULTS FOR 2021-2022			
QUARTER	NEW CLUB GOAL	NEW CLUBS	DROPPED CLUBS
JULY/AUG/SEPT	1	0	1
OCT/NOV/DEC	1	1	0
JAN/FEB/MAR	1	0	0
APR/MAY/JUNE	1	0	0

Members			
RESULTS FOR 2021-2022			
QUARTER	MEMBER GROWTH NET GOAL	MEMBER GROWTH ACTUAL	DROPPED MEMBERS ACTUAL (including transfers)
JULY/AUG/SEPT	60	28	24
OCT/NOV/DEC	28	57	35
JAN/FEB/MAR	60	24	16
APR/MAY/JUNE	27	0	0

GOALS AND ACTUAL NEW CLUBS CUMULATIVE



GOALS AND ACTUAL MEMBERS CUMULATIVE



DROPPED CLUBS: 1

23 CLUBS OF 59 ADDED 1 OR MORE NEW MEMBERS

GENDER DISTRIBUTION

MALE	880 (60.65%)
FEMALE	571 (39.35%)
NON BINARY	0 (0.00%)
PREFER NOT TO ANSWER	0 (0.00%)

DROPPED MEMBERS

[CLICK HERE FOR CUMULATIVE MEMBERSHIP DATA](#)

DECEASED	11
CLUB CANCELLED	0
OTHER	64
TOTAL	75

TOTAL FAMILY UNIT MEMBERS	333
FAMILY MEMBERS PAYING HALF DUES	175